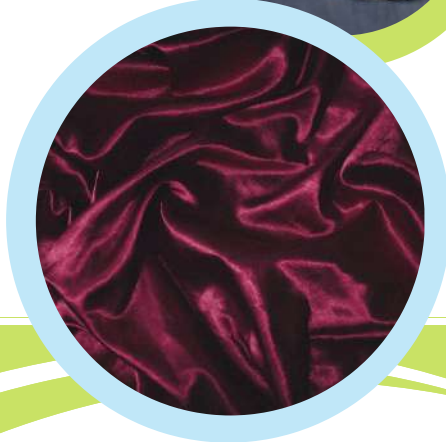


EPOXIN-T

Alcohol-based Surface Protection developed for Suede, Nubuck, Velvet Polyester surfaces



FEATURES

- ✓ It repels water and oil.
- ✓ Provides UV protection.
- ✓ It provides late contamination of the surface.
- ✓ The surface continues to breathe.
- ✓ Protects the surface against chemicals.
- ✓ It is repellent to liquids.
- ✓ Protection for up to 1 year.

CONTACT

- 🌐 www.epoxin.com.tr
- ✉ info@epoxin.com.tr
- ☎ +90 (216) 680 91 58



AREA OF USE

- ✓ Clothes
- ✓ Furniture
- ✓ Carpets
- ✓ Fabrics
- ✓ Cleaning companies
- ✓ Vehicles
- ✓ Hotels
- ✓ Hospitals
- ✓ Leather manufacturers
- ✓ Shoe manufacturers
- ✓ Textile Companies

APPLICATION

- ✓ The surface should be cleaned of dirt, dust, water, oil and detergent residues before application and the application should be made on a dry surface
- ✓ The application should be made in a way that is not directly exposed to the sun.
- ✓ From a bottle with a trigger, a sufficient amount of homogeneous spraying should be carried out.
- ✓ Dryness to the touch: 6 hours, full curing is 24 hours.

PACKAGING

- ✓ 1 ltr covers 10 sqm
- ✓ 1 Ltr, 5 Ltr, 30 Ltr

